

HER301 THRU HER308

Features

- High Surge Current Capability
- High Reliability
- Low Forward Voltage Drop
- High Current Capability

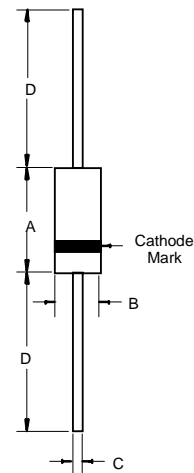
**3.0 Amp High
Efficient Rectifiers
50 to 1000 Volts**

Maximum Ratings

Operating Temperature: -55 C to +125 C
Storage Temperature: -55 C to +150 C
For capacitive load, derate current by 20%

Catalog Number	Device Marking	Maximum Recurrent Peak Reverse Voltage	Maximum RMS Voltage	Maximum DC Blocking Voltage
HER301	---	50V	35V	50V
HER302	---	100V	70V	100V
HER303	---	200V	140V	200V
HER304	---	300V	210V	300V
HER305	---	400V	280V	400V
HER306	---	600V	420V	600V
HER307	---	800V	560V	800V
HER308	---	1000V	700V	1000V

DO-201AD



Electrical Characteristics @ 25 C Unless Otherwise Specified

Average Forward Current	$I_{F(AV)}$	3 A	$T_A = 55\text{ C}$
Peak Forward Surge Current	I_{FSM}	150A	8.3ms, half sine
Maximum Instantaneous Forward Voltage HER301-304 HER305 HER306-308	V_F	1.0V 1.3V 1.7V	$I_{FM} = 3.0A$; $T_A = 25\text{ C}$
Reverse Current At Rated DC Blocking Voltage (Maximum DC)	I_R	10 A 200 A	$T_A = 25\text{ C}$ $T_A = 100\text{ C}$
Maximum Reverse Recovery Time HER301-305 HER306-308	T_{rr}	50ns 75ns	$I_F=0.5A, I_R=1.0A,$ $I_{rr}=0.25A$
Typical Junction Capacitance HER301-305 HER306-308	C_J	80pF 50pF	Measured at 1.0MHz, $V_R=4.0V$

*Pulse Test: Pulse Width 300 sec, Duty Cycle 1%

DIMENSIONS

DIM	INCHES		MM		NOTE
	MIN	MAX	MIN	MAX	
A	---	.370	---	9.50	
B	---	.250	---	6.40	
C	.048	.052	1.20	1.30	
D	1.000	---	25.40	---	

HER301 THRU HER308

RATINGS AND CHARACTERISTIC CURVES

FIG.1- REVERSE RECOVERY TIME CHARACTERISTIC AND TEST CIRCUIT DIAGRAM

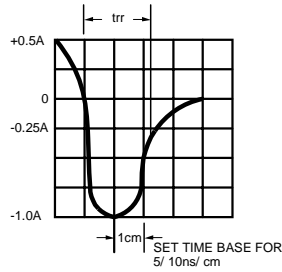
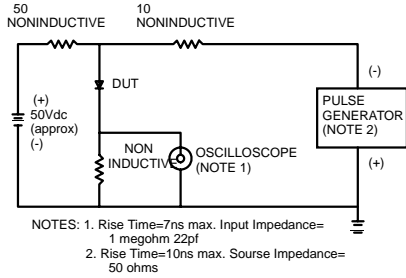


FIG.2- MAXIMUM AVERAGE FORWARD CURRENT DERATING

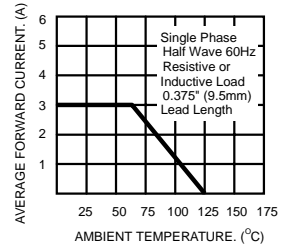


FIG.3- TYPICAL REVERSE CHARACTERISTICS

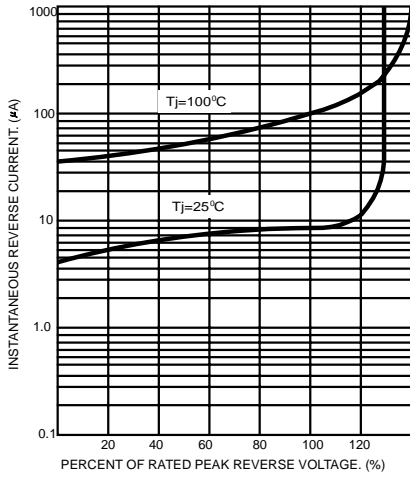


FIG.5- TYPICAL FORWARD CHARACTERISTICS

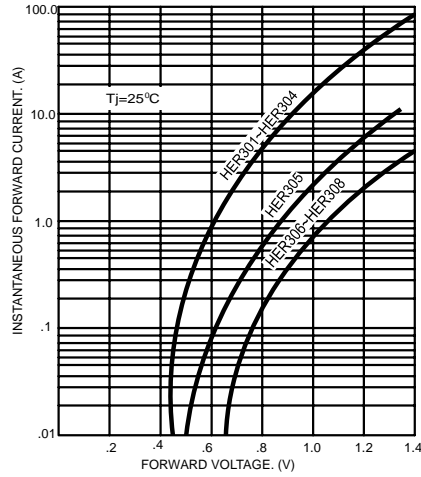


FIG.4- MAXIMUM NON-REPETITIVE FORWARD

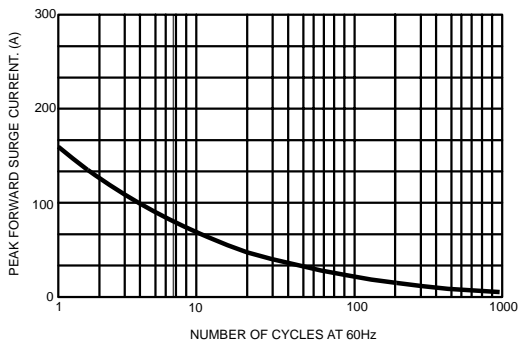


FIG.6- TYPICAL JUNCTION CAPACITANCE

